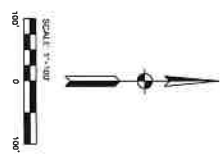


PROGRESS MAP  
 SCALE 1"=100'-0"



- LEGEND**
- NOT INSTALLED
  - GRAVITY SEWER OR SERVICE LINE
  - FORCE MAIN OR SERVICE LINE
  - GRINDER PUMP STATION
  - SERVICE VALVES, MAINLINE VALVES, ARY, FLUSHING CONNECTIONS AND MANHOLES
  - FLUSHING CONNECTIONS AND MANHOLES
  - INSTALLED
  - GRAVITY SEWER OR SERVICE LINE
  - FORCE MAIN OR SERVICE LINE
  - GRINDER PUMP STATION
  - SERVICE VALVES, MAINLINE VALVES, ARY, FLUSHING CONNECTIONS AND MANHOLES
  - TESTED
  - GRAVITY SEWER OR SERVICE LINE
  - FORCE MAIN OR SERVICE LINE
  - GRINDER PUMP STATION
  - SERVICE VALVES, MAINLINE VALVES, ARY, FLUSHING CONNECTIONS AND MANHOLES

Drawing No. <b>PM1</b>	Scale X OF 43	Date 1/10/2023	Project 2021 SANITARY SEWER EXTENSIONS - CONTRACT B - OAKWOOD ADDITION (YOST WOODS) FRINGE
		Designer [Name]	Checker [Name]

ADAMS COUNTY REGIONAL SEWER DISTRICT  
 ADAMS COUNTY, INDIANA

2021 SANITARY SEWER EXTENSIONS - CONTRACT B - OAKWOOD ADDITION (YOST WOODS) FRINGE

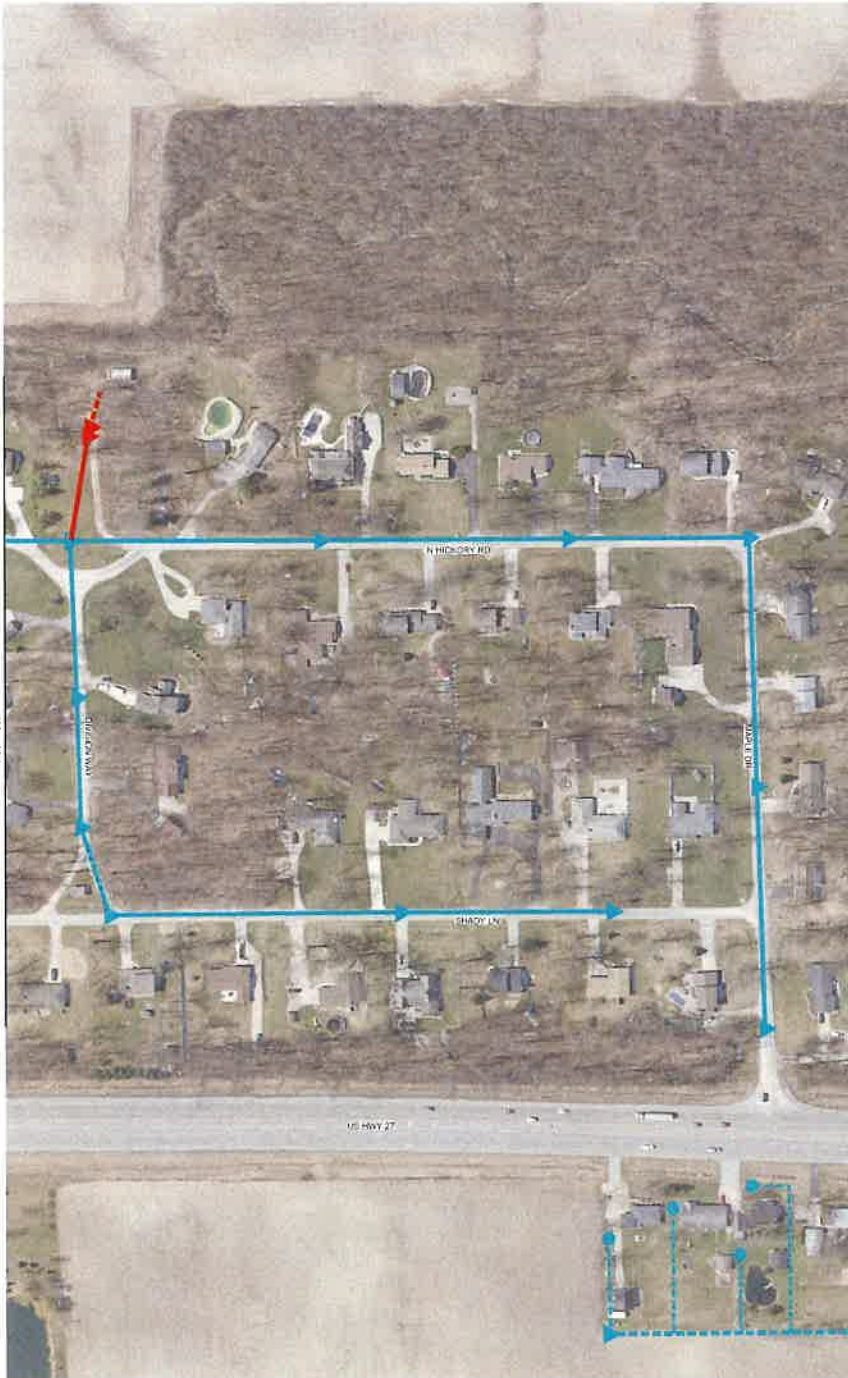
PROGRESS MAP

AS OF 1/10/2023

**COMMONWEALTH ENGINEERS, INC.**

1111 W. 10th Street, Suite 100  
 Terre Haute, IN 47787  
 Phone: 812.845.1111  
 Fax: 812.845.1112  
 Email: info@commonwealthengineers.com

Professional Engineer  
 License No. 12345  
 State of Indiana



MATCHLINE (SEE DWG PM1)

MATCHLINE (SEE DWG PM2)

PROGRESS MAP  
 SCALE: 1"=100'-0"

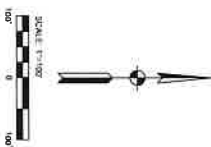
**LEGEND**

**NOT INSTALLED**

- GRANTY SEWER OR SERVICE LINE
- - - GRANTY MAIN OR SERVICE LINE
- GRINDER PUMP STATION
- ▲ SERVICE VALVES, MANLINE VALVES, AIRY, FLUSHING CONNECTIONS AND MANHOLES

**INSTALLED**

- GRANTY SEWER OR SERVICE LINE
  - - - GRANTY MAIN OR SERVICE LINE
  - GRINDER PUMP STATION
  - ▲ SERVICE VALVES, MANLINE VALVES, AIRY, FLUSHING CONNECTIONS AND MANHOLES
- TESTED**
- GRANTY SEWER OR SERVICE LINE
  - - - GRANTY MAIN OR SERVICE LINE
  - GRINDER PUMP STATION
  - ▲ SERVICE VALVES, MANLINE VALVES, AIRY, FLUSHING CONNECTIONS AND MANHOLES



**COMMONWEALTH ENGINEERS, INC.**  
 1000 N. W. 11th St., Suite 100, Ft. Lauderdale, FL 33304  
 Phone: (954) 574-1111 Fax: (954) 574-1112  
 www.commonwealthengineers.com

A.S. OF 1/10/2023

**ADAMS COUNTY REGIONAL SEWER DISTRICT  
 ADAMS COUNTY, INDIANA**

2021 SANITARY SEWER EXTENSIONS - CONTRACT B - OAKWOOD ADDITION (YOST WOODS) FRINGE

PROGRESS MAP

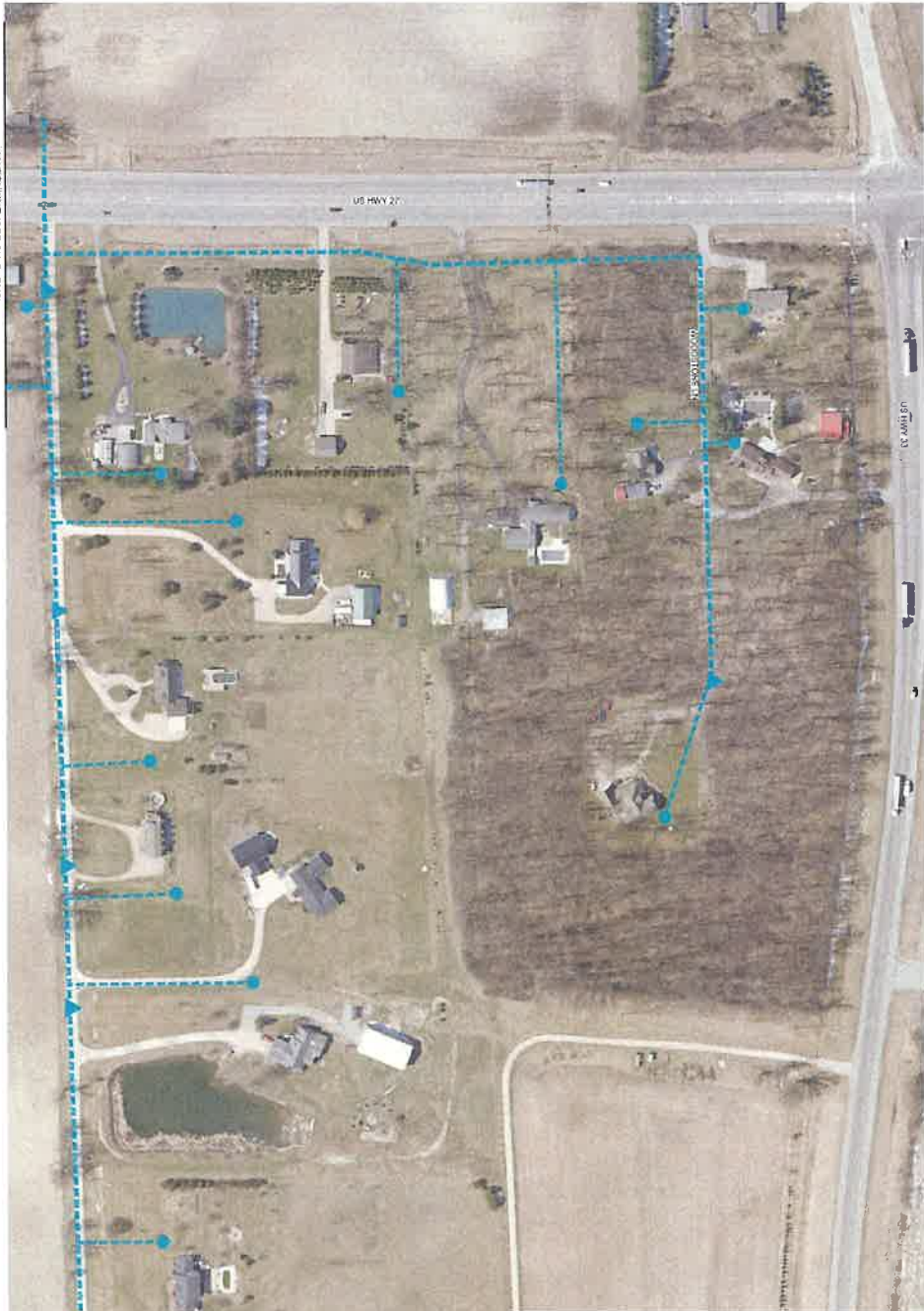
© 2021 BY COMMONWEALTH ENGINEERS, INC. ALL RIGHTS RESERVED. REPRODUCTION BY ANY METHOD IN WHOLE OR IN PART WITHOUT PERMISSION IS PROHIBITED.

**Indiana 811**  
 1-800-392-5544  
 (IT'S THE LAW)

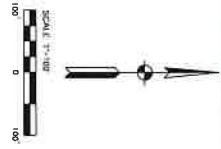
**PM2**

Drawing No.

Sheet X OF 43



PROGRESS MAP  
 SCALE: 1"=100'-0"



- LEGEND**
- NOT INSTALLED**
- GRAVITY SEWER OR SERVICE LINE
  - - - FORCE MAIN OR SERVICE LINE
  - GRINDER PUMP STATION
  - ▲ SERVICE VALVES, MAINLINE VALVES, ARY, FLUSHING CONNECTIONS AND MANHOLES
- INSTALLED**
- GRAVITY SEWER OR SERVICE LINE
  - - - FORCE MAIN OR SERVICE LINE
  - GRINDER PUMP STATION
  - ▲ SERVICE VALVES, MAINLINE VALVES, ARY, FLUSHING CONNECTIONS AND MANHOLES
- TESTED**
- GRAVITY SEWER OR SERVICE LINE
  - - - FORCE MAIN OR SERVICE LINE
  - GRINDER PUMP STATION
  - ▲ SERVICE VALVES, MAINLINE VALVES, ARY, FLUSHING CONNECTIONS AND MANHOLES

<p><b>PMS</b></p> <p>Drawings No.</p> <p>Sheet X OF 43</p>	<p>Designed By: [Name]</p> <p>Checked By: [Name]</p> <p>Drawn By: [Name]</p> <p>Project No.: [Number]</p> <p>Scale: [Scale]</p> <p>Date: [Date]</p>	<p>DATE BY COMMONWEALTH ENGINEERS, INC. ALL RIGHTS RESERVED. REPRODUCTION BY ANY METHOD IN WHOLE OR IN PART WITHOUT PERMISSION IS PROHIBITED.</p> <p><b>Indiana 811</b></p> <p>www.in.gov/811</p> <p>Call before you dig.</p> <p>OR 1-800-438-362-5544</p> <p>(IT'S THE LAW)</p>	<p><b>ADAMS COUNTY REGIONAL SEWER DISTRICT</b></p> <p><b>ADAMS COUNTY, INDIANA</b></p> <p>2021 SANITARY SEWER EXTENSIONS - CONTRACT B - OAKWOOD ADDITION (YOST WOODS) FRINGE</p> <p>PROGRESS MAP</p>	<p>AS OF: 1/10/2023</p>	<p><b>COMMONWEALTH ENGINEERS, INC.</b></p> <p>1000 N. W. 10th St., Suite 100          Ft. Lauderdale, FL 33309          Phone: (954) 577-1111          Fax: (954) 577-1112          Email: info@commonwealth-engineers.com</p>
--	---	--	--	-------------------------	--